

DFH Series High Pressure Duplex Filter



210 bar/250 bar, 3000 psi/3600 psi Max
 3M media - 30 GPM / 115 LPM Max
 25M media - 58 GPM / 184 LPM Max
 *W media - 102 GPM / 384 LPM Max

TYPICAL DUPLEX APPLICATIONS

Ideal for systems where filters must be serviced while continuous operation is not interrupted.

- Marine Hydraulics
- Wind Turbine
- Hydraulic Systems
- Gearbox Systems
- Servo Systems
- Boiler Feed Pump
- Mechanical/Electro Hydraulic Controls
- Turbine Lube Oil
- Bearing Lube Oil
- Fuel Handling
- FD-ID-PA Fan Lube Oil

PRODUCT SPECIFICATIONS

Materials	
Head	Steel
Bowl	Forged Steel
Seals	Nitrile (buna) or Fluoro (viton)
Media options	G7 Dualglass, Stainless mesh
Interior coating	Corrosion resistant
Exterior coating	Powder paint coated or Anodized
Operating Pressure	
DFH19* Series	Maximum 250 Bar, 3600 PSI (tested to 325 Bar, 4700 PSI)
DFH39* Series	Maximum 200 Bar, 3000 PSI (tested to 260 Bar, 3750 PSI)
Temperature rating	Buna -40°F(-40°C) to 225°F(120°C) Viton -15°F(-26°C) to 275°F(135°C)
Fluid compatibility	Biodegradable and mineral based fluids. For High water based or specified synthetics consult factory

PRODUCT FEATURES

Duplex Assembly	Maintain continuous filtration while servicing the filter element
User Friendly Handle	Pistol grip handle with pressure equalization release allows for easy switching with one hand
Compact Assembly	All valve components are integrated into the filter assembly head which keeps the overall assembly size very compact
DFE Rated Filter Elements	DFE Rated filter elements ensure fluid cleanliness even under severe dynamic conditions of hydraulic systems

HIGH PERFORMANCE FILTER ELEMENTS - THE HEART OF A FILTER

Dynamic Filter Efficiency (DFE) Testing

Revolutionary test methods assure that DFE rated elements perform true to rating even under demanding variable flow and vibration conditions. Today's industrial and mobile hydraulic circuits require elements that deliver specified cleanliness under ALL circumstances. Wire mesh supports the media to ensure against cyclical flow fatigue, temperature, and chemical resistance failures possible in filter elements with synthetic support mesh. Contact your distributor or Hy-Pro for more information and published articles on DFE testing.

Media Options

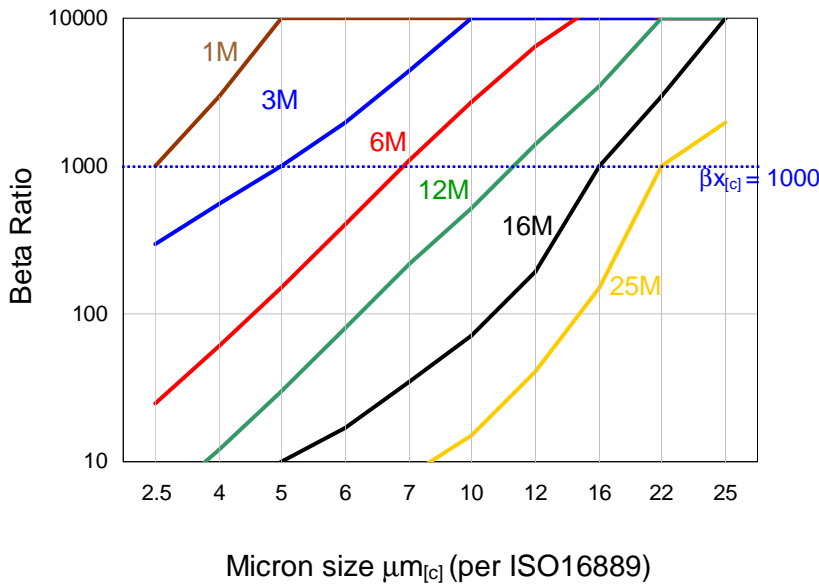
Through extensive testing we have developed media choices to handle any application. Options include G7 Dualglass, Dynafuzz (stainless fiber), and Wire mesh (stainless).

Fluid Compatibility

Petroleum based fluids, water glycol, polyol ester, phosphate ester, high water based fluids and many other synthetics. Contact us for seal material selection assistance.

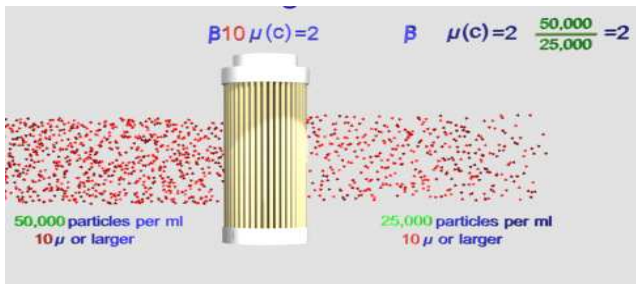
FILTER MEDIA SPECIFICATIONS

Glass Media Code Filtration Efficiency (Beta Ratio) vs Micron Size

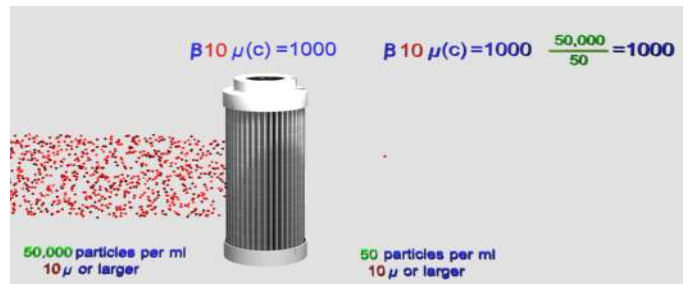


media code	media description
A	G7 Dualglass high performance media combined with water removal scrim. $\beta_{x[c]} = 1000$ ($\beta_x = 200$)
M	G7 Dualglass our latest generation of DFE rated, high performance glass media for all hydraulic & lubrication fluids. $\beta_{x[c]} = 1000$ ($\beta_x = 200$)
W	Stainless steel wire mesh media $\beta_{x[c]} = 2$ ($\beta_x = 2$) nominally rated

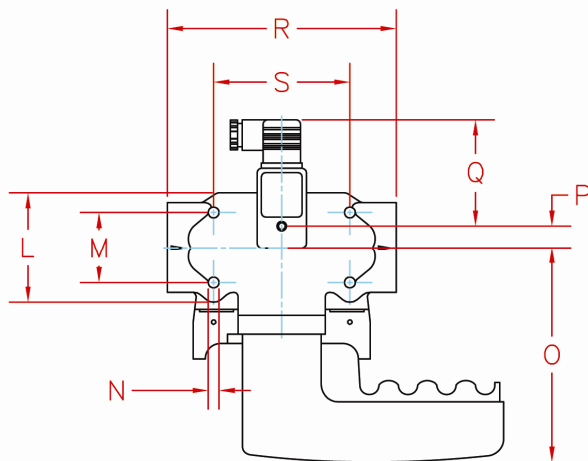
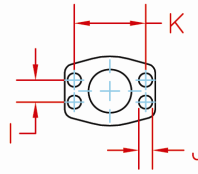
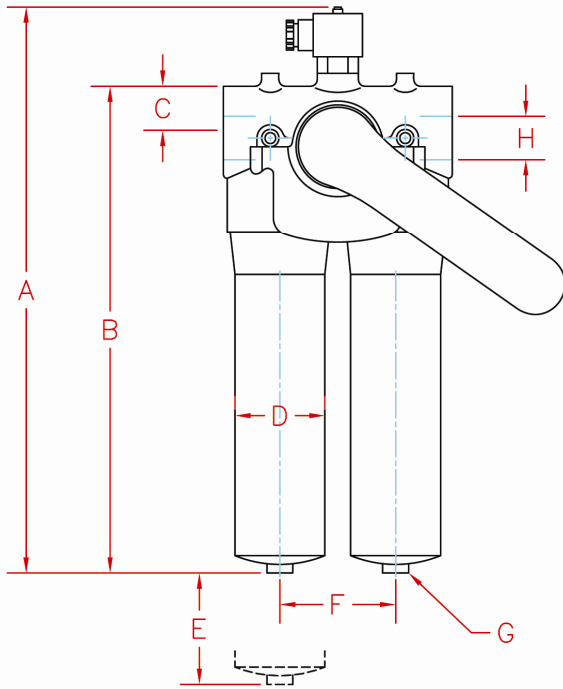
Typical cellulose media performance



Hy-Pro G7 Dualglass media performance



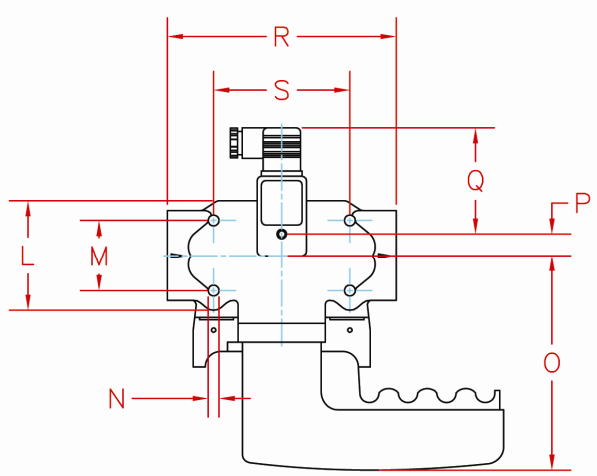
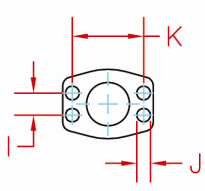
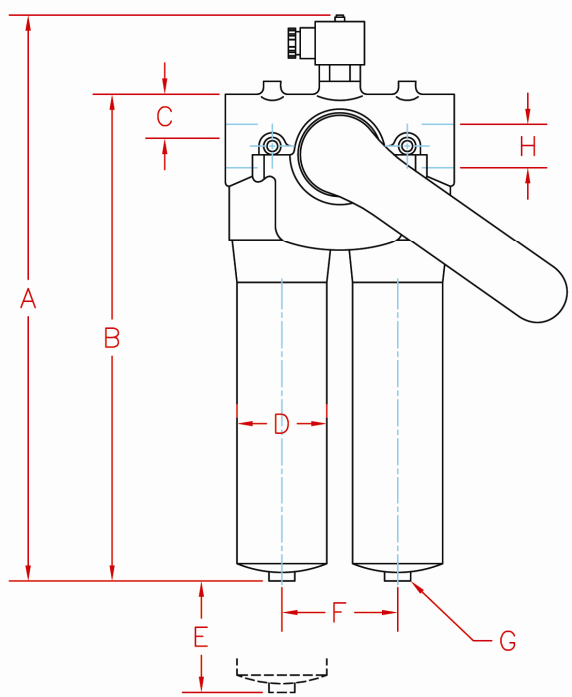
DFH19* INSTALLATION DRAWING AND SPARE PARTS LIST



	DFH19**-* 4	DFH19**-* 6	DFH19**-* 10
	IN (mm)	IN (mm)	IN (mm)
A	10.35 (263)	12.72 (323)	16.38 (416)
B	8.07 (205)	10.43 (265)	14.1 (358)
C	1.50 (38)	1.50 (38)	1.50 (38)
D	2.60 (66)	2.60 (66)	2.60 (66)
E	3.15 (80)	3.15 (80)	3.15 (80)
F	3.34 (85)	3.34 (85)	3.34 (85)
G	SW27	SW27	SW27
H	G1 BSPP or 1" SAE Flange Code 61	G1 BSPP or 1" SAE Flange Code 61	G1 BSPP or 1" SAE Flange Code 61
I	1.03 (26,2)	1.03 (26,2)	1.03 (26,2)
J	M 10 x 20	M 10 x 20	M 10 x 20
K	2.06 (52,4)	2.06 (52,4)	2.06 (52,4)
L	3.19 (81)	3.19 (81)	3.19 (81)
M	2.05 (52)	2.05 (52)	2.05 (52)
N	M 8 x 16	M 8 x 16	M 8 x 16
O	5.47 (139)	5.47 (139)	5.47 (139)
P	0.63 (16)	0.63 (16)	0.63 (16)
Q	3.07 (78)	3.07 (78)	3.07 (78)
R	6.61 (168)	6.61 (168)	6.61 (168)
S	3.94 (100)	3.94 (100)	3.94 (100)
weight	5.7 Lbs (2,6 kg)	6.4 Lbs (2,9 kg)	7.3 Lbs (3,3 kg)

1	Element (see Element number guide)	p/n
2	Seal Kit	
	Nitrile NBR	DFH19SKB
	Fluorocarbon	DFH19SKV
3	Replacement Bowl Kits	
	Single length code 4	DFH19B4
	Double length code 6	DFH19B6
	Triple length code 10	DFH19B10

DFH39* INSTALLATION DRAWING AND SPARE PARTS LIST



	DFH39*** 6	DFH39**-* 10	DFH39**-* 15
	IN (mm)	IN (mm)	IN (mm)
A	13.74 (349)	17.48 (444)	23.15 (588)
B	11.45 (291)	15.20 (386)	20.87 (530)
C	1.58 (40)	1.58 (40)	1.58 (40)
D	4.29 (109)	4.29 (109)	4.29 (109)
E	4.33 (110)	4.33 (110)	4.33 (110)
F	5.51 (140)	5.51 (140)	5.51 (140)
G	SW32	SW32	SW32
H	G1 1/2" BSPP, 1 1/2" SAE Flange Code 61	G1 1/2" BSPP, 1 1/2" SAE Flange Code 61	G1 1/2" BSPP, 1 1/2" SAE Flange Code 61
I	1.40 (35,7)	1.40 (35,7)	1.40 (35,7)
J	M 12 x 20	M 12 x 20	M 12 x 20
K	2.75 (69,9)	2.75 (69,9)	2.75 (69,9)
L	5.51 (140)	5.51 (140)	5.51 (140)
M	2.44 (62)	2.44 (62)	2.44 (62)
N	M 10 x 20	M 10 x 20	M 10 x 20
O	5.47 (139)	5.47 (139)	5.47 (139)
P	0.75 (19)	0.75 (19)	0.75 (19)
Q	3.07 (78)	3.07 (78)	3.07 (78)
R	11.02 (280)	11.02 (280)	11.02 (280)
S	8.27 (210)	8.27 (210)	8.27 (210)
weight	15.6 Lbs (7,1 kg)	17.6 Lbs (8,0 kg)	35.9 Lbs (16,3 kg)

1	Element (see Element number guide)	p/n
2	Seal Kit	
	Nitrile NBR	DFH39SKB
	Fluorocarbon	DFH39SKV
3	Replacement Bowl Kits	
	Single length code 4	DFH39B6
	Double length code 6	DFH39B10
	Triple length code 10	DFH39B15